

Indexing Levers

SPECIFICATION

Types

- Type **A**: Without serrations
- Type **B**: With 30 serrations

Steel
Blackened

Cover
Plastic

Black, with affixed PVC cover disk in light grey

Keyway for bore
K10: 3 P9 x 1.1
K12 ... K16: DIN 6885/2

Ball knob DIN 319 (see page)
Plastic, Duroplast
Black, shiny finish



INFORMATION

With indexing levers GN 215 shafts can be turned through a predetermined angle and positively locked. To index, lift the lever against spring pressure from serrations (one hand control).

Limiting the indexing angle can be achieved with two dowels (see sketch).

The **bushing** is connected to the shaft via parallel key / keyway.

The **location flange** is bolted to the machine with two screws (M 5).

The **lever**, via the location pin, provides the connection between shaft and location flange.

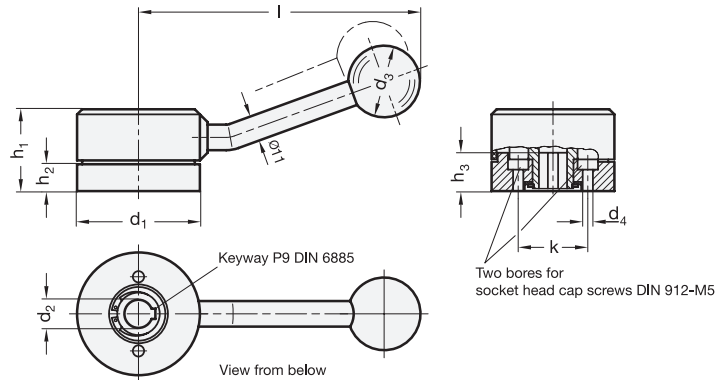
The serrations are protected from swarf and similar particles by the cover. This cover can be inserted by hand (elastic segments engage into a groove) and removed with a screw driver.

ON REQUEST

- Serrations, restricted angle to drawing

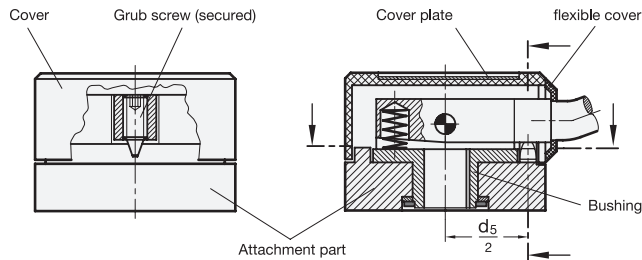
TECHNICAL INFORMATION

- ISO-Fundamental Tolerances (see page A21)
- Keyway DIN 6885 (see page A16)

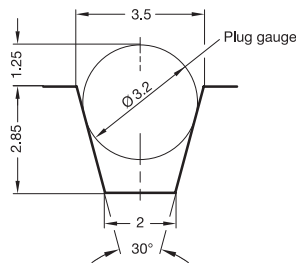


GN 215

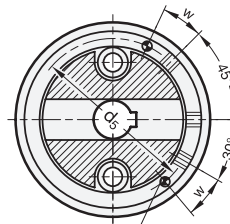
Description	d1	d2 H7	d3	d4	d5	h1	h2	h3 max.	k	l	w +0.5°	△
GN 215-54-K10-A	54	K 10	32	5,2	44,5	37	13	16,5	30	122	22°	480
GN 215-54-K12-A	54	K 12	32	5,2	44,5	37	13	16,5	30	122	22°	466
GN 215-60-K14-A	60	K 14	32	5,2	50	39	15	18,5	36	125	19°	619
GN 215-60-K16-A	60	K 16	32	5,2	50	39	15	18,5	36	125	19°	597
GN 215-54-K10-B	54	K 10	32	5,2	44,5	37	13	16,5	30	122	22°	461
GN 215-54-K12-B	54	K 12	32	5,2	44,5	37	13	16,5	30	122	22°	440
GN 215-60-K14-B	60	K 14	32	5,2	50	39	15	18,5	36	125	19°	600
GN 215-60-K16-B	60	K 16	32	5,2	50	39	15	18,5	36	125	19°	580



Enlargement of serrations with plug gauge to aid checking



Example with three serrations and restricted indexing angle



Dowel pin ISO 8750 Ø 3,5 x 7 mm protruding (only applicable when restricted indexing angle is required)
w = angle from serration (lever position)

Technical and assembly instructions

The location pin is a wedge-type as standard, which guarantees backlash-free positioning and also achieving easy engagement and disengagement.

If backlash-free positioning is not required, a dowel pin (made from a grub screw DIN 915-M6x14) can be used. The serrations can be made square or with dowels and suitable holes. Such holes have to be made large enough to ensure that the dowel is not restricted on engagement (lever swivel radius).

Smallest available angle for special serrations:

11° for size 54

9° for size 60

Smaller angles can be achieved with suitable serrations and dowels.

